

H270 SERIES II HARVESTER HEAD

John Deere Saw Bars and Chains Selection Guide, SuperCut 100

SAW MOTOR	STANDARD BAR	SPEEDMAX	STUMP TREATMENT BAR	STUMP TREATMENT BAR SPEEDMAX	LENGTH CM	CHAIN CHAIN	CHAIN LINK	STANDARD BAR HOLDER	SPRAY BAR HOLDER	SPROCKET CODE	DRIVE SPROCKET TOOTH COUNT
John Deere 19 / Bucher 20	F697332	F697340	F702889	F713077	82	F700128	94	F060989	F065794	F700145	z 13
John Deere 19 / Bucher 20	F697325	F697338	F702887	F713074	75	F700121	87	F060989	F065794	F700145	z 13

John Deere Saw Bars and Chains Selection Guide, SuperCut 100S

SAW MOTOR	STANDARD BAR	SPEEDMAX	STUMP TREATMENT BAR	STUMP TREATMENT BAR SPEEDMAX	LENGTH CM	CHAIN CHAIN	CHAIN LINK	SAW BAR HOLDER	SPROCKET CODE	DRIVE SPROCKET TOOTH COUNT
John Deere 19 / Bucher 20	F697332	F697340	F702889	F713077	82	F700174	95	F707900	F700145	z 13
Bucher 32	F697335	F702883	F702890	F713079	82	F700130	98	F707900	F700149	z 18
John Deere 19 / Bucher 20	F697325	F697338	F702887	F713074	75	F700122	88	F707900	F700145	z 13
Bucher 32	F697329	F702882	F713076	F713076	75	F700124	90	F707900	F700149	z 18

Soft Rollers

TYPE	LEFT/RIGHT	UPPER	LOWER	PART NO.
MenSe V-Tec	Left/right		X	F722314
Moipu, Flex Standard	Left/right		X	F703759
Rib	Left/right		X	F682207
Tireco	Left/right		X	F060838



H270 SERIES II HARVESTER HEAD

Standard Rollers

TYPE	LEFT/RIGHT	UPPER	LOWER	PART NO.
Moipu, Flex Aggressive	Left/right		X	F703643
MenSe, Steel Standard	Left/right		X	F063262
MenSe, Rubber Standard	Left/right		X	F063261

Aggressive Rollers

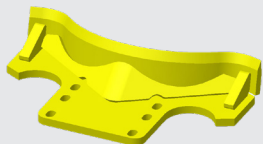
TYPE	LEFT/RIGHT	UPPER	LOWER	PART NO.
Moipu, Steel	Left/right		X	F703965
MenSe, Steel Aggressive	Left		X	F074908
MenSe, Steel Aggressive	Right		X	F074909
MenSe, Rubber Aggressive	Left		X	F074906
MenSe, Rubber Aggressive	Right		X	F074907

Delimiting knives

DESCRIPTION	TYPE	ADDITIONAL INFO	PART NO.
Knife STD	Top knife	Welded	F673924
Knife Euca	Top knife	Welded	F673957
Knife Classic	Top knife	Welded	F687197
Delimber LH	Upper delimiting knife	Welded	F673919
Delimber RH	Upper delimiting knife	Welded	F673920
Delimber LH/RH	Lower delimiting knives	Welded	F673926

Delimiting knives

Top knife Euca



Top knife Standard



Top knife Classic



Measuring wheels

DESCRIPTION	PART NO.
STD	F655667
Sharp	F633609
Grooved	F065141

Expander pins

DESCRIPTION	ORIGINAL JOHN DEERE PIN	EXPANDER PIN
Feed roller arm pin	F642267	F690136
Feed roller arm cylinder	F638885	F690123
Upper knife pin	F678929	F690332
Upper knife cylinder outer pin	F703259	F689987
Lower knife cylinder	F703259	F689987

Feed motors

DESCRIPTION	TYPE	ADDITIONAL INFO	PART NO.
Poclain 780cc	Lower feed motors		F676373
Poclain 780cc	Lower feed motors	High Flow	F688810
Poclain 857cc	Lower feed motors	High Flow	F688812
Poclain 934cc	Lower feed motors	High Flow	F688813

Saw motors

DESCRIPTION	ADDITIONAL INFO	PART NO.
John Deere Power Boost SuperCut	19cc	F687445
Bucher SuperCut	20cc	F072207
Bucher SuperCut	32cc *)	F709893

*) Only suitable with SuperCut 100S saw unit